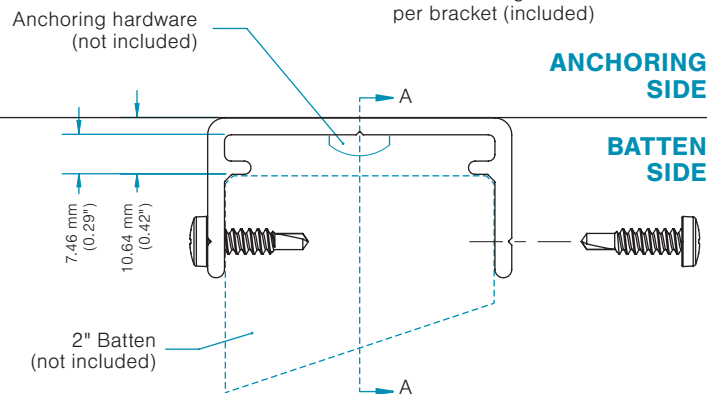
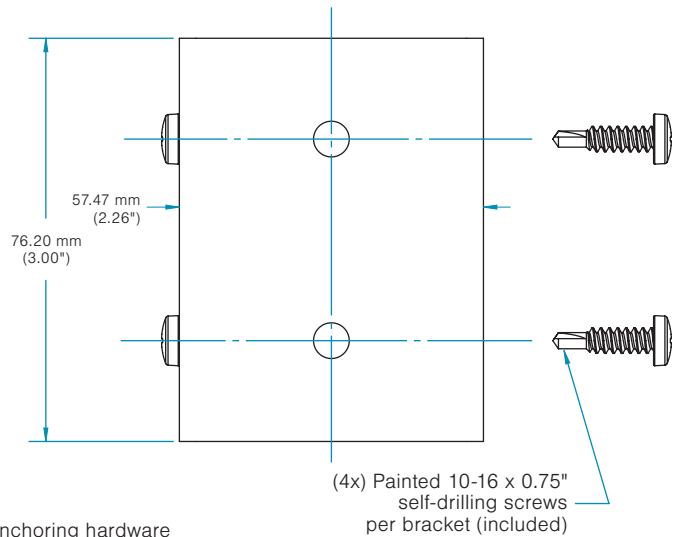
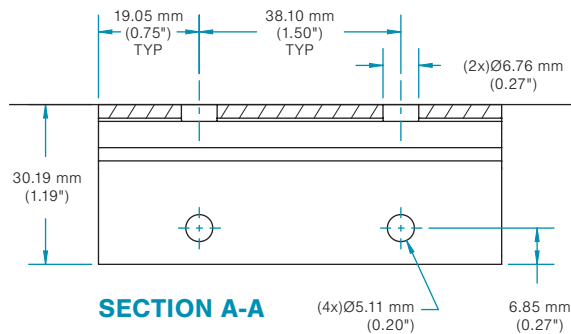
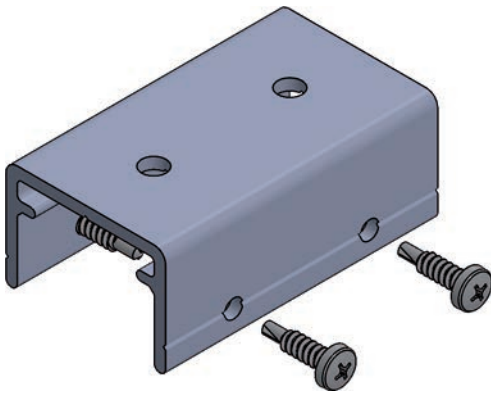


TECHNICAL DATA SHEET – INSTALLATION

Aluminum batten accessories
MAA Serie

CC Bracket – 2 in Batten



General Specifications

MODEL

CC Bracket - 2 in Batten

MATERIAL

6063-T6 aluminum

FINISH

RAL 7022 Matte

WEIGHT

0.17 lb | 0.077 kg

RECOMMENDATION

Recommended Span distance mounting for anchor screws (by others) and/or Maibec aluminum Brackets is 8'-0" (2438 mm) c/c*.

* Calculated for 1" (25 mm), 1.5" (38 mm) and 2" (50 mm) battens thickness from 2" (50 mm) to 8" (203 mm) width. For other dimensions, please contact customer services.

NOTE

The first screw/bracket must be installed a maximum of 12" (305 mm) from each batten end.

IMPORTANT

Always check local building regulations before installing Maibec aluminum battens.